



• MÓR THAN •
JUST A GREAT BAR

VENUE TECHNICAL SPECIFICATION

CONTENTS

01. Location & Contact Details
02. General Information
03. Light Specification
04. Sound Specification
05. Supplementary Costs



WHERE TO FIND US...

📍 Òran Mór
Top of Byres Road
Glasgow
G12 8QX



CONTACT DETAILS

GENERAL ENQUIRIES

☎ 0141 357 6200
✉ info@oran-mor.co.uk
👉 www.oran-mor.co.uk

EVENTS *LIVE MUSIC, COMEDY & THEATRE* Creon Brock & Jamie Webster

✉ creon@oran-mor.co.uk
✉ jamie@oran-mor.co.uk

BOX OFFICE

Erika Maliszewski
☎ 0141 357 6211
✉ erika@oran-mor.co.uk

PRODUCTION

PK
✉ pk@oran-mor.co.uk

**Please have events team and production copied in on all advancing*



VENUE SPECIFICATION DETAILS

CAPACITY

Standing: 550

Unreserved Seating: 270



PARKING & LOAD-IN

SPLITTER VANS/CARS

Splitter vans and cars can park in the driveway on the Byres Rd side of the building for load in/out however vehicles need to be moved out into the street before doors open due to fire regulations.

TOUR BUSES

Tour buses need to park in the loading bay next to the venue on Byres Rd (see picture 1). This is a shared loading bay and we can't reserve it for our own use so we recommend arriving overnight prior to 7am to guarantee the space.

We leave power in the driveway for the driver to hook up to and ask that they use the hook on the wall (see picture 2) to fly the power overhead so that the cable isn't going across the pavement.

Please note parking may incur a parking ticket which the venue are not viable for.

[insert parking images]

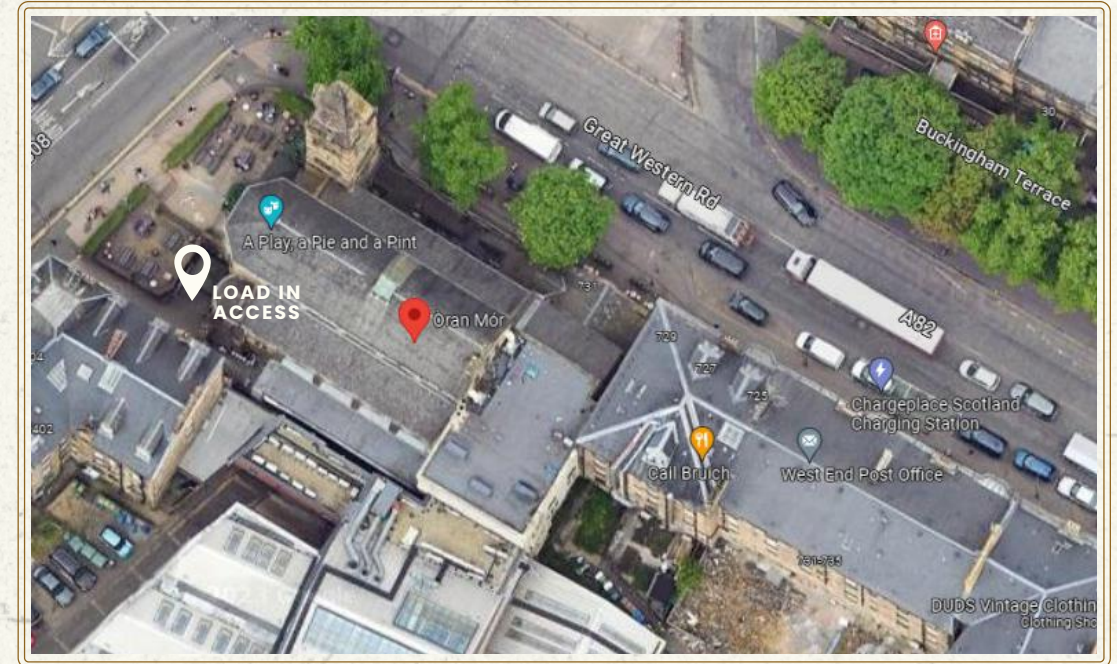
LOAD-IN

If in a splitter van it is a very short push to stage from the driveway.

If in a tour bus then it is still a short push but from top of the driveway. The driveway is on a very slight slope, downhill for load-in and uphill for load-out.

LOAD-IN ACCESS

- Double doors at venue: 2.54m(H) x 1.36m (W)
- 2nd double doors: 2.04m(H) x 1.36m(W)



STAGE

Size: 5m(W) x 5m(D) x 3ft(H)
Clearance above stage: 2.14m
Distance from stage to FOH: 13.2m

Please note we don't have risers and advise against using them due to size of stage and clearance above.

CREW

Not supplied by the venue.
We recommend Mad Crew Ltd:

☎ 0141 883 2879
➤ www.mcfmadcrew.com

SECURITY

Supplied in-house as part of the room hire and numbers dependent on sales.

PRODUCTION OFFICE

There is a production office stage left.

DRESSING ROOMS

We have a comfortable dressing room with a single shower next door to it. Dressing room has couches, fridge, kettle and mirror

WIFI

Network: OranMorVenue
Password: venuewifi



MERCHANDISE

Table space is available at the back of the venue close to where the audience enter and exit. We are able to provide staffing at cost on request.

BOX OFFICE

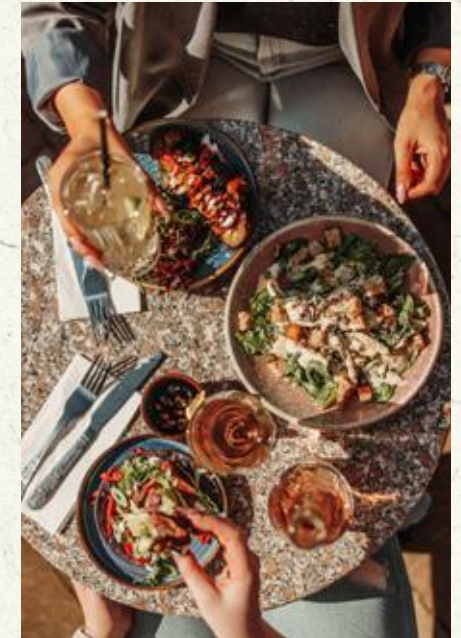
We have a box office in the foyer of the building open 11am-3pm Monday to Saturday. We ask for a 50% allocation of tickets which are sold through Ticketweb online as well as in person and over the phone at our box office.

LOCAL MUSIC SHOPS

CC MUSIC 0.4 MILES
📍 33 Otago Street
G12 8JJ
☎ 0141 339 0566

GATERING

We offer a 50% discount on food for promoters/bands and you can find our menu on our website.



Scan the QR code to view our menu.



SOUND

POWER

3 x 32A single phase hard wired
2 x 32A single phase CEE + FORM

BACKLINE POWER

4 x 13A 4 ways
2 x 13A 6 way power drops'
All run from 32A single phase

FOH SPEAKERS

4 way turbo sound aspect series
(4 x TA500Tops, 4 x TSW218Subs)

FOH AMPLIFIERS

2 x MC2 E25
3 x MC2 E45

FOH OUTBOARD

Waves SoundGrid Server
Various Waves Plugin

FOH CONSOLE

DiGiCo SD9

FOH POWER & CONNECTIONS

4 x 13A sockets

MIC LEADS & STANDS

12 x short boom stands
10 x tall boom stands
40 x XLR cables & looms
2 x 8 way stage boxes

MICROPHONES / DIS

1 x Shure Beta 91A
1 x Shure Beta 52A
9 x Shure SM58
1 x Shure Beta 58
6 x Shure SM57
3 x Shure Beta 57
2 x Sennheiser e945
4 x Sennheiser e903
2 x Sennheiser e606
1 x Sennheiser e602
1 x Sennheiser e614
5 x Sennheiser e604
2 x AKG C451B
2 x SE 1A
8 x BSS AR133 Active DI

SYSTEM CONTROLLER

2 x Turbosound LMS D6

MONITOR CONSOLE

DiGiCo S31 (*Use of monitor console with extra engineer is an extra £120+VAT and needs to be communicated at least 1 week in advance*)

MONITOR SPEAKERS

8 x L-Acoustics 115XT HiQ
2 x Turbosound TQ315

MONITOR AMPLIFIERS

1 x LAB Gruppen FP 2400Q
6 x L'Acoustics LA48 Amps
1 x MC2 E25

MULTICORE

DiGiCo D-Rack 32 Channel Stage Box
2 x Cat5

LIGHTING

POWER

2 x 16A Single Phase
1 x 32A 3 Phase Output (*No Cable*)

LIGHTING CONSOLE

ChamSys MQ80

LIGHTING FIXTURES

6 x Equinox Fusion 100 Spot
14 x Visage LED PAR 375
2 x PixelPar 90
4 x Chauvet Ovation F55
2 x Chauvet Ovation FG5
2 x Chauvet Ovation F265
2 x Prolight T2-350 LED Zoom
3 x Strand Quartet F
2 x Strand Cantata 2644
2 x Strand Profile
2 x Blinders
1 x Atomic 300 Strobe

HAZE

1 x Look Solutions Unique 2.1 Hazer

FOH POWER & CONNECTIONS

4 x 13A Sockets + (DMX x 3 lines)





THE WORLD FAMOUS

Ó R A N

M Ó R™



• MÓR THAN •
JUST A GREAT BAR